

LAMPIRAN

1. Tabulasi Data Penelitian

No	Nama Perusahaan	Tahun	Nilai Perusahaan	Risiko Bisnis	Keputusan Pendanaan	Kebijakan Dividen	Ukuran Perusahaan
1	PT Astra International Tbk (ASII)	2018	1,46014	0,14630	0,97697	0,47103	33,4737275
2	PT Astra Otoparts (AUTO)	2018	0,73702	0,05610	0,41070	0,43442	30,3966889
3	PT Mitra Pinasthika Mustika Tbk (MPMX)	2018	0,60392	0,01419	0,36193	0,00000	30,1112005
4	PT Indomobil Sukses Internasional Tbk (IMAS)	2018	0,89377	0,01444	2,96717	3,38181	31,3435193
5	PT Gajah Tunggal Tbk (GJTL)	2018	0,81682	0,00558	2,35447	0,00000	30,6122222
6	PT Indospring Tbk (INDS)	2018	0,70296	0,06166	0,13130	0,59088	28,5402218
7	PT Multi Prima Sejahtera Tbk (LPIN)	2018	0,44346	0,36899	0,10245	0,00000	26,4323557
8	PT Garuda Metalindo Tbk (BOLT)	2018	2,16994	0,08662	0,77820	0,99844	27,9028611
9	PT Bintraco Dharma Tbk (CARS)	2018	0,83918	0,04259	3,83742	0,25316	29,8446793
10	PT Prima Alloy Steel Universal Tbk (PRAS)	2018	0,65513	0,01419	1,37680	0,00000	28,122996
11	PT Selamat Sempurna Tbk (SMSM)	2018	3,11047	0,21058	0,30272	0,18557	28,6610701
12	PT Multistrada Arah Sarana Tbk (MASA)	2018	1,21910	0,07965	1,02381	0,00000	29,8578256
13	PT Goodyear Indonesia Tbk (GDYR)	2018	0,99964	0,00643	1,31674	0,00000	28,2275306
14	PT Indo Kordsa Tbk (BRAM)	2018	1,38619	0,10247	0,34506	0,97732	29,0828288

15	PT Astra International Tbk (ASII)	2019	1,26590	0,14359	0,88452	0,51776	33,494533
16	PT Astra Otoparts (AUTO)	2019	0,64572	0,07251	0,37468	0,40696	30,4045912
17	PT Mitra Pinasthika Mustika Tbk (MPMX)	2019	0,55055	0,04141	0,31617	3,85630	29,8889938
18	PT Indomobil Sukses Internasional Tbk (IMAS)	2019	0,86097	0,02000	3,75106	0,20447	31,4309647
19	PT Gajah Tunggal Tbk (GJTL)	2019	0,77742	0,02873	2,02392	0,00000	30,5678563
20	PT Indospring Tbk (INDS)	2019	0,62500	0,06219	0,10191	0,65210	28,6728594
21	PT Multi Prima Sejahtera Tbk (LPIN)	2019	0,43801	0,35509	0,07127	0,00000	26,5068331
22	PT Garuda Metalindo Tbk (BOLT)	2019	1,95403	0,05739	0,66342	0,56417	27,8668142
23	PT Bintraco Dharma Tbk (CARS)	2019	1,12689	0,01313	3,30814	-0,16667	29,6814698
24	PT Prima Alloy Steel Universal Tbk (PRAS)	2019	0,66787	0,15791	1,56631	0,00000	28,1361067
25	PT Selamat Sempurna Tbk (SMSM)	2019	2,97559	0,20886	0,27215	0,19000	28,7646726
26	PT Multistrada Arah Sarana Tbk (MASA)	2019	1,24387	0,02893	1,30875	0,00000	29,461911
27	PT Goodyear Indonesia Tbk (GDYR)	2019	1,05756	0,00891	1,29882	0,00000	28,1407029
28	PT Indo Kordsa Tbk (BRAM)	2019	2,04674	0,08362	0,26658	1,07826	28,9831624
29	PT Astra International Tbk (ASII)	2020	1,14328	0,12420	0,73035	0,58336	33,4546674
30	PT Astra Otoparts (AUTO)	2020	0,61154	0,00978	0,34685	-6,37437	30,3510061
31	PT Mitra Pinasthika Mustika Tbk (MPMX)	2020	0,55274	0,02535	0,45636	2,11993	29,8512934

32	PT Indomobil Sukses Internasional Tbk (IMAS)	2020	0,86232	0,02908	2,80681	-0,05052	31,5107007
33	PT Gajah Tunggal Tbk (GJTL)	2020	0,74285	0,03546	1,59391	0,00000	30,5091887
34	PT Indospring Tbk (INDS)	2020	0,55728	0,04631	0,10240	1,11371	28,6699754
35	PT Multi Prima Sejahtera Tbk (LPIN)	2020	0,38938	0,08146	0,08978	0,00000	26,5456973
36	PT Garuda Metalindo Tbk (BOLT)	2020	2,02900	0,08069	0,59860	0,00000	27,7435252
37	PT Bintraco Dharma Tbk (CARS)	2020	0,96877	0,22603	5,13112	0,00000	29,3692331
38	PT Prima Alloy Steel Universal Tbk (PRAS)	2020	0,73976	0,00234	2,21038	0,00000	28,1431994
39	PT Selamat Sempurna Tbk (SMSM)	2020	2,57820	0,21161	0,27450	0,23530	28,8475723
40	PT Multistrada Arah Sarana Tbk (MASA)	2020	1,94772	0,08531	0,96757	0,00000	29,4676885
41	PT Goodyear Indonesia Tbk (GDYR)	2020	0,96915	0,02707	1,58463	0,00000	28,1227639
42	PT Indo Kordsa Tbk (BRAM)	2020	1,42282	0,02530	0,26481	-1,57973	28,9397488
43	PT Astra International Tbk (ASII)	2021	1,04122	0,13855	0,70355	0,35260	33,53723
44	PT Astra Otoparts (AUTO)	2021	0,62950	0,04984	0,43067	0,22213	30,4611207
45	PT Mitra Pinasthika Mustika Tbk (MPMX)	2021	0,88360	0,04139	0,57690	1,26372	29,920494
46	PT Indomobil Sukses Internasional Tbk (IMAS)	2021	0,81673	0,00030	2,97188	-0,67604	31,5633095
47	PT Gajah Tunggal Tbk (GJTL)	2021	0,74793	0,00614	1,64773	0,43466	30,5460353
48	PT Indospring Tbk (INDS)	2021	0,63424	0,08053	0,23615	0,35169	28,894814

49	PT Multi Prima Sejahtera Tbk (LPIN)	2021	1,69272	0,21152	0,09456	2,12727	26,4626731
50	PT Garuda Metalindo Tbk (BOLT)	2021	1,81553	0,08944	0,67368	0,00000	27,9446714
51	PT Bintraco Dharma tbk (CARS)	2021	1,06012	0,07317	-7,82802	0,00000	29,0954955
52	PT Prima Alloy Steel Universal Tbk (PRAS)	2021	0,81116	0,00202	2,36060	0,00000	28,1243713
53	PT Selamat Sempurna Tbk (SMSM)	2021	2,27173	0,22152	0,32876	0,17377	28,9839815
54	PT Multistrada Arah Sarana Tbk (MASA)	2021	7,75323	0,13960	0,91961	0,00000	29,6347451
55	PT Goodyear Indonesia Tbk (GDYR)	2021	0,91946	0,01640	1,48022	0,00000	28,1632896
56	PT Indo Kordsa Tbk (BRAM)	2021	2,07066	0,13787	0,38204	0,71647	29,0461974
57	PT Astra International Tbk (ASII)	2022	0,96863	0,16720	0,69579	0,52864	33,6551876
58	PT Astra Otoparts (AUTO)	2022	0,67525	0,09316	0,41908	0,16668	30,5499404
59	PT Mitra Pinasthika Mustika Tbk (MPMX)	2022	0,86628	0,05395	0,43680	1,34033	29,8159277
60	PT Indomobil Sukses Internasional Tbk (IMAS)	2022	0,81387	0,03719	3,05476	0,07425	31,6818503
61	PT Gajah Tunggal Tbk (GJTL)	2022	0,72264	0,01097	1,63173	0,00000	30,5763025
62	PT Indospring Tbk (INDS)	2022	0,56060	0,08157	0,30181	0,23415	28,9874914
63	PT Multi Prima Sejahtera Tbk (LPIN)	2022	0,58805	0,18403	0,10724	0,23810	26,5446623
64	PT Garuda Metalindo Tbk (BOLT)	2022	1,63856	0,05507	0,65572	0,38927	27,9712575

65	PT Bintraco Dharma Tbk (CARS)	2022	1,15845	0,03787	4,69353	0,00000	28,9584868
66	PT Prima Alloy Steel Universal Tbk (PRAS)	2022	0,83012	1,20983	3,21142	0,00000	28,0864904
67	PT Selamat Sempurna Tbk (SMSM)	2022	2,26052	0,23947	0,31953	0,17007	29,1079733
68	PT Multistrada Arah Sarana Tbk (MASA)	2022	2,98502	0,14605	0,42515	0,00000	29,6114696
69	PT Goodyear Indonesia Tbk (GDYR)	2022	0,92910	0,00252	1,74231	0,00000	28,2973179
70	PT Indo Kordsa Tbk (BRAM)	2022	1,58263	0,13528	0,30753	0,42744	29,1468554
71	PT Astra International Tbk (ASII)	2023	0,95134	0,17288	0,77974	1,14418	33,7306201
72	PT Astra Otoparts (AUTO)	2023	0,83862	0,10793	0,34893	0,10471	30,6072159
73	PT Mitra Pinasthika Mustika Tbk (MPMX)	2023	0,83419	0,04571	0,40693	1,10065	29,7826701
74	PT Indomobil Sukses Internasional Tbk (IMAS)	2023	0,84265	0,03826	3,06642	0,26361	31,7727664
75	PT Gajah Tunggal Tbk (GJTL)	2023	0,74994	0,09049	1,27203	0,00000	30,5741823
76	PT Indospring Tbk (INDS)	2023	0,25385	0,06649	0,27747	0,35874	29,1260312
77	PT Multi Prima Sejahtera Tbk (LPIN)	2023	0,51907	0,21163	0,07225	0,33333	26,5540187
78	PT Garuda Metalindo Tbk (BOLT)	2023	1,63304	0,10459	0,54210	0,54681	27,9268496
79	PT Bintraco Dharma Tbk (CARS)	2023	1,16107	0,04752	3,41247	0,00000	28,9839968
80	PT Prima Alloy Steel Universal Tbk (PRAS)	2023	0,87939	6,57391	4,82423	0,00000	27,9962628
81	PT Selamat Sempurna Tbk (SMSM)	2023	2,71779	0,25479	0,26026	0,18293	29,1515826

82	PT Multistrada Arah Sarana Tbk (MASA)	2023	4,62889	0,19665	0,37416	38,85236	29,7143061
83	PT Goodyear Indonesia Tbk (GDYR)	2023	0,89410	0,03870	1,21686	36,12396	28,1815365
84	PT Indo Kordsa Tbk (BRAM)	2023	0,83270	0,09885	0,32227	2213,18359	29,1536531

2. Hasil Output SPSS

Descriptives

Descriptive Statistics

	N	Minimum	Maximum	Mean	Std. Deviation
Nilai perusahaan	84	-,59543	,88948	,0137904	,25043168
Risikobisnis	84	-3,53000	-,43299	-1,2244955	,55343204
Keputusanpendanaan	84	-1,14707	,89365	-,1536687	,49014223
Kebijakandividen	84	-1,12928	3,34502	-,1721639	,74505556
Ukuranperusahaan	84	1,42214	1,52802	1,4685648	,02450020
Valid N (listwise)	48				

Regression

Variables Entered/Removed^a

Model	Variables Entered	Variables Removed	Method
1	Kebijakandividen, Keputusanpendanaan, Risikobisnis ^b		Enter

a. Dependent Variable: Nilai perusahaan

b. All requested variables entered.

Model Summary^b

Model	R	R Square	Adjusted R Square	Std. Error of the Estimate	R Square Change	Change Statistics			Sig. F Change	Durbin-Watson
						F Change	df1	df2		
1	,622 ^a	,387	,345	,20981846	,387	9,265	3	44	,000	1,513

a. Predictors: (Constant), Kebijakandividen, Keputusanpendanaan, Risikobisnis

b. Dependent Variable: Nilai perusahaan

ANOVA^a

Model		Sum of Squares	df	Mean Square	F	Sig.
1	Regression	1,224	3	,408	9,265	,000 ^b
	Residual	1,937	44	,044		
	Total	3,161	47			

a. Dependent Variable: Nilaiperusahaan

b. Predictors: (Constant), Kebijakandividen, Keputusanpendanaan, Risikobisnis

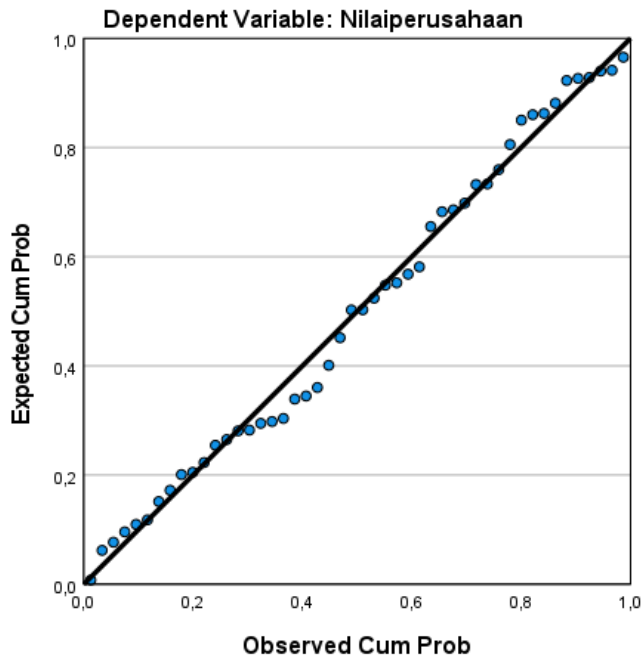
Coefficients^a

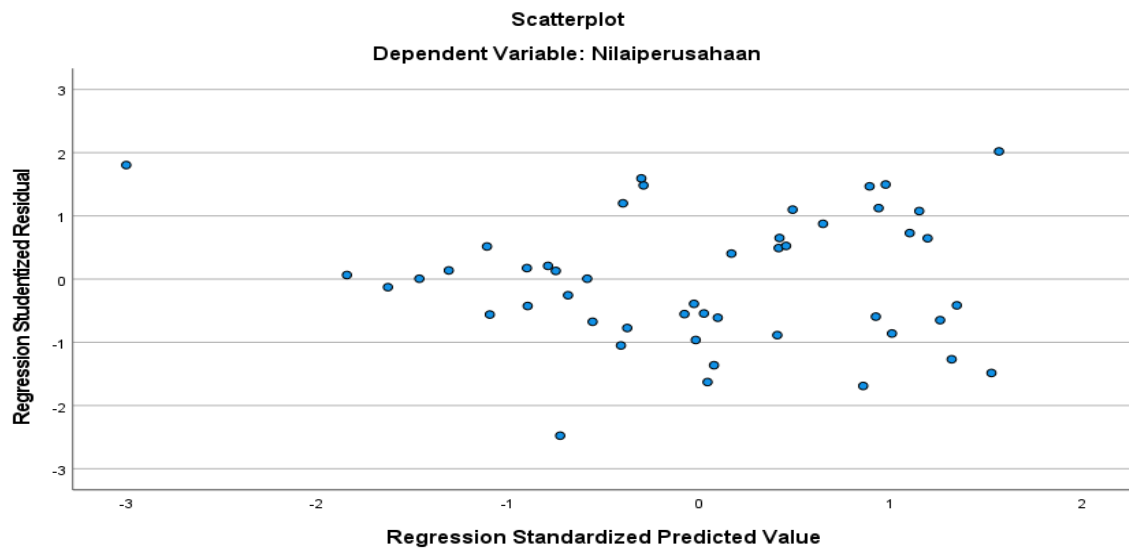
Model		Unstandardized Coefficients		Standardized Coefficients	t	Sig.	Collinearity Statistics	
		B	Std. Error	Beta			Tolerance	VIF
1	(Constant)	,723	,137		5,295	,000		
	Risikobisnis	,551	,105	,739	5,269	,000	,707	1,414
	Keputusanpendanaan	,259	,088	,410	2,935	,005	,714	1,401
	Kebijakandividen	,038	,042	,109	,913	,366	,975	1,026

a. Dependent Variable: Nilaiperusahaan

Charts

Normal P-P Plot of Regression Standardized Residual





One-Sample Kolmogorov-Smirnov Test

		Unstandardized Residual	
Normal Parameters ^{a,b}	Mean	,0000000	
	Std. Deviation	,20301172	
Most Extreme Differences	Absolute	,081	
	Positive	,081	
	Negative	-,067	
Test Statistic		,081	
Asymp. Sig. (2-tailed) ^c		,200 ^d	
Monte Carlo Sig. (2-tailed) ^e	Sig.	,584	
	99% Confidence Interval	Lower Bound	,571
		Upper Bound	,596

a. Test distribution is Normal.

b. Calculated from data.

c. Lilliefors Significance Correction.

d. This is a lower bound of the true significance.

e. Lilliefors' method based on 10000 Monte Carlo samples with starting seed 2000000.

		Coefficients ^a					Collinearity Statistics	
Model		Unstandardized Coefficients		Standardized Coefficients	t	Sig.	Tolerance	VIF
		B	Std. Error	Beta				
1	(Constant)	,747	,137		5,460	,000		
	X1Z	,384	,071	,768	5,437	,000	,681	1,469
	X2Z	,192	,061	,444	3,154	,003	,685	1,460
	X3Z	,026	,028	,110	,931	,357	,975	1,026

a. Dependent Variable: Nilaiperusahaan

		Model Summary ^b								Durbin-Watson
Model	R	R Square	Adjusted R Square	Std. Error of the Estimate	Change Statistics				Sig. F Change	
					R Square Change	F Change	df1	df2		
1	,693 ^a	,480	,432	,19547160	,480	9,930	4	43	,000	1,410

a. Predictors: (Constant), Ukuranperusahaan, Kebijakandidiven, Risikobisnis, Keputusanpendanaan

b. Dependent Variable: Nilaiperusahaan

		ANOVA ^a				
Model		Sum of Squares	df	Mean Square	F	Sig.
1	Regression	1,518	4	,379	9,930	,000 ^b
	Residual	1,643	43	,038		
	Total	3,161	47			

a. Dependent Variable: Nilaiperusahaan

b. Predictors: (Constant), Ukuranperusahaan, Kebijakandidiven, Risikobisnis, Keputusanpendanaan

		Coefficients ^a				
Model		Unstandardized Coefficients	Standardized Coefficients	t	Sig.	Collinearity Statistics

	B	Std. Error	Beta			Tolerance	VIF
1 (Constant)	6,426	2,060		3,120	,003		
Risikobisnis	,616	,100	,826	6,147	,000	,669	1,495
Keputusanpendanaan	,433	,103	,684	4,187	,000	,452	2,210
Kebijakandiden	,032	,039	,093	,832	,410	,972	1,029
Ukuranperusahaan	-3,784	1,364	-,390	-2,774	,008	,613	1,632

a. Dependent Variable: Nilai perusahaan



FORM BIMBINGAN DENGAN DOSEN PEMBIMBING

NIM	2020011042	Nama Mahasiswa	SETYA GITA PRAMESTI
Program Studi	Akuntansi	Jenis TA	Skripsi
Periode Mulai	2023/2024 Genap	SKS Lulus	146 SKS
Tgl. Mulai	19 Juni 2024	Judul Tugas Akhir	Analisis Manajemen Resiko dan Pengaruh Penerapan Bunga Cicilan Pada Kinerja Aplikasi Keuangan Beli Sekarang Bayar Nanti (paylater) di Indonesia. (Studi Empiris Pada Perusahaan Aplikasi Keuangan Beli Sekarang Bayar Nanti Terdaftar di BEI)

No	Tanggal	Dosen Pembimbing	Topik	Disetujui	Aksi
1	24 Februari 2024	Dr. Arry Eksandy, SE. MAkt.	Penjelasan BAB 1-3	✓	
2	26 Februari 2024	Dr. Arry Eksandy, SE. MAkt.	Pengecekan BAB 1-3	✓	
3	13 Maret 2024	Dr. Arry Eksandy, SE. MAkt.	Pengecekan Judul Baru	✓	
4	2 Mei 2024	Dr. Arry Eksandy, SE. MAkt.	Pengecekan revisi setelah sidang sempro	✓	
5	18 Mei 2024	Dr. Arry Eksandy, SE. MAkt.	Tabulasi Data	✓	
6	1 Juni 2024	Dr. Arry Eksandy, SE. MAkt.	Pembahasan terkait Bab 4 dan 5	✓	
7	21 Juni 2024	Dr. Arry Eksandy, SE. MAkt.	Pengecekan Bab 4 dan 5	✓	
8	24 Juni 2024	Dr. Arry Eksandy, SE. MAkt.	Pengecekan dan Persetujuan Sidang	✓	

